

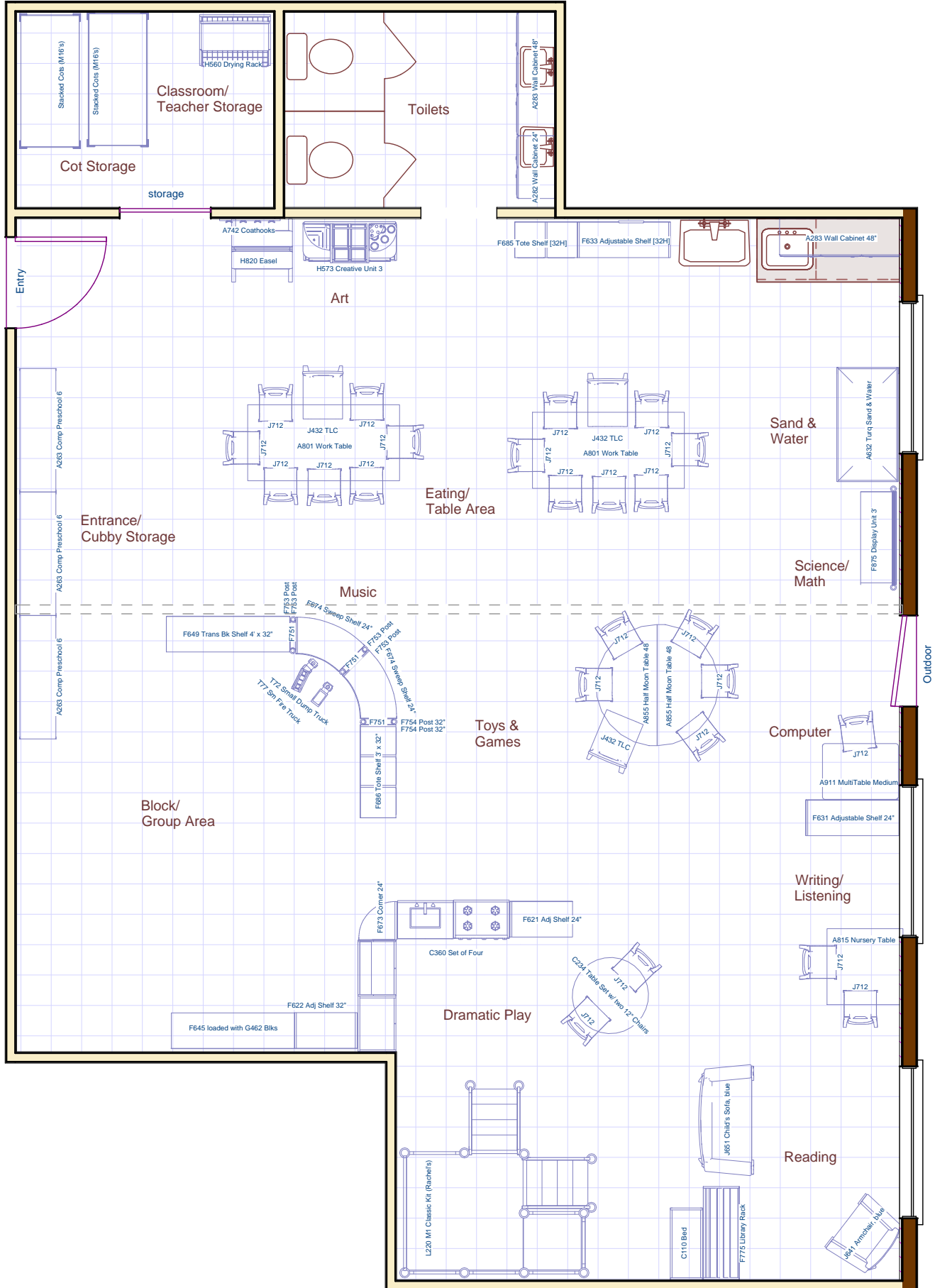


Sample Head Start Room C
18 Children ages 3-5 years
Approximately 800 square feet





Sample Head Start Room C
18 Children ages 3-5 years
Approximately 800 square feet





Sample Head Start Room C
 18 Children ages 3-5 years
 Approximately 800 square feet

Item #	Description	Qty	Unit Price	Ext. Price
Entrance/Cubby Storage				
A263	Compact Preschool Cubby 6	3	\$630.00	\$1,890.00
Art				
A742	Coathook Strip 24"	1	\$37.00	\$37.00
H863	Tulip Apron Large	4	\$24.00	\$96.00
H820	Multi-purpose Easel	1	\$280.00	\$280.00
H560	Drying Rack	1	\$490.00	\$490.00
H573	Creative Unit 3 w/ totes or baskets	1	\$715.00	\$715.00
Teacher/Storage				
F685	Tote Shelf 2' x 32"	1	\$405.00	\$405.00
F633	Adjustable Shelf 3' x 32"	1	\$380.00	\$380.00
A283	Wall-Mounted Cabinet 48"	2	\$550.00	\$1,100.00
A282	Wall-Mounted Cabinet 24"	1	\$350.00	\$350.00
Eating/Table Area				
A801	Classroom Work Table	2	\$240.00	\$480.00
A855	Classroom Halfmoon Table 48	2	\$205.00	\$410.00
J712	Woodcrest Chair 12"	19	\$96.00	\$1,824.00
J432	Teacher Chair, 12"	3	\$156.00	\$468.00
Sand & Water/Science				
A632	Large Turquoise Table	1	\$425.00	\$425.00
A633	Large Storage Rack	1	\$69.00	\$69.00
F875	Display Unit 3' w/ Totes or Baskets	1	\$600.00	\$600.00
Toys & Games				
F686	Tote Shelf 3' x 32"	1	\$525.00	\$525.00
F674	Sweep Shelf 24"	1	\$265.00	\$265.00
F754	Roomscapes Post 32"	2	\$27.00	\$54.00
F751	Filler	1	\$5.00	\$5.00
Computer				
A911	Medium 22" x 30" MultiTable	1	\$172.00	\$172.00
J712	Woodcrest Chair 12"	1	\$96.00	\$96.00
Writing/Listening				
A815	Classroom Nursery Table	1	\$175.00	\$175.00
F631	Adjustable Shelf 3' x 24"	1	\$315.00	\$315.00
J712	Woodcrest Chair 12"	2	\$96.00	\$192.00
				continued on next page



Sample Head Start Room C
 18 Children ages 3-5 years
 Approximately 800 square feet

Item #	Description	Qty	Unit Price	Ext. Price
Reading				
F775	Library Rack	1	\$225.00	\$225.00
J641	Child's Armchair, Blue	1	\$300.00	\$300.00
J651	Child's Sofa, Blue	1	\$375.00	\$375.00
Dramatic Play				
C110	Bed	1	\$118.00	\$118.00
C234	Round Woodcrest Table 20" and Two Chairs 12"	1	\$385.00	\$385.00
C360	Woodcrest Kitchen (set of four)	1	\$1,040.00	\$1,040.00
F673	Corner Shelf 24"	1	\$185.00	\$185.00
F621	Adjustable Shelf 2' x 24"	1	\$255.00	\$255.00
L220	Model 1 Classic Kit	1	\$3,170.00	\$3,170.00
Blocks/Group Area				
F622	Adjustable Shelf 2' x 32"	1	\$310.00	\$310.00
F645	Fixed Shelf 4' x 32"	1	\$470.00	\$470.00
G462	Half School Set Unit Blocks	1	\$945.00	\$945.00
F649	Translucent Back Shelf 4' x 32"	1	\$470.00	\$470.00
F753	Roomscapes Post 24"	4	\$24.00	\$96.00
F751	Filler	2	\$5.00	\$10.00
T72	Small Dump Truck	1	\$57.00	\$57.00
T77	Small Fire Truck	1	\$64.00	\$64.00
Music				
F674	Sweep Shelf 24"	1	\$265.00	\$265.00
Naptime				
M16	Community Cot(Rest Bed)	18	\$63.00	\$1,134.00
			Total:	\$21,692.00