



## Sample Early Headstart B

8 Children 18-24months

(Approximately 515 sq feet)

Need to customize? Call 800.777.4244 or  
email [Sales@CommunityPlaythings.com](mailto:Sales@CommunityPlaythings.com)



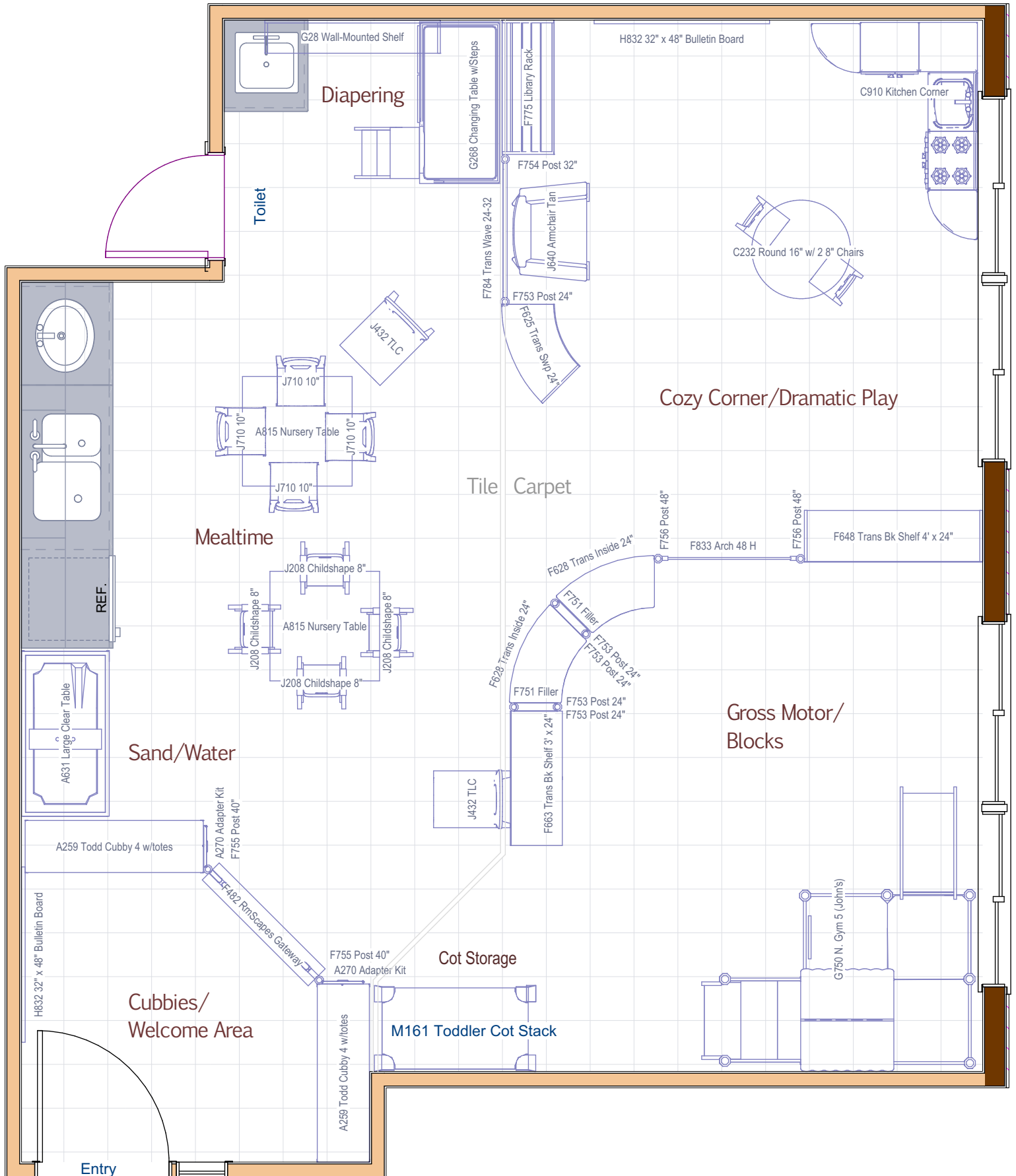


# Sample Early Headstart B

8 Children 18-24months

(Approximately 515 sq feet)

Need to customize? Call 800.777.4244 or email Sales@CommunityPlaythings.com





## Sample Early Head Start B

8 children, 18-24months

Pricing intended for budgeting purposes only. Contact Community Playthings for a formal quote.

Item No.	Description	Qty	Price	Ext. Price
A259	Toddler Cubby 4 w/ Totes or Baskets	2	\$605.00	\$1,210.00
A270	Roomscapes Adapter Kit	2	\$55.00	\$110.00
A631	Large Clear Table	1	\$445.00	\$445.00
A815	Classroom Nursery Table	2	\$175.00	\$350.00
C232	Round Woodcrest Table 16" and Two Chairs 8"	1	\$385.00	\$385.00
C910	Kitchen Corner	1	\$970.00	\$970.00
F482	Roomscapes Gateway	1	\$330.00	\$330.00
F625	Translucent Back Sweep Shelf 24"	1	\$275.00	\$275.00
F628	Translucent Back Inside Sweep Shelf 24"	2	\$290.00	\$580.00
F648	Translucent Back Shelf 4' x 24"	1	\$395.00	\$395.00
F663	Translucent Back Shelf 3' x 24"	1	\$325.00	\$325.00
F751	Filler	2	\$5.00	\$10.00
F753	Roomscapes Post 24"	5	\$24.00	\$120.00
F754	Roomscapes Post 32"	1	\$27.00	\$27.00
F755	Roomscapes Post 40"	2	\$33.00	\$66.00
F756	Roomscapes Post 48"	2	\$36.00	\$72.00
F775	Library Rack	1	\$240.00	\$240.00
F784	Translucent Wave Panel 24" to 32"	1	\$146.00	\$146.00
F833	Arch, 36" x 48"	1	\$98.00	\$98.00
G268	Changing Table with steps and 6" Pan	1	\$1,550.00	\$1,550.00
G28	Wall-mounted Shelf	1	\$360.00	\$360.00
G750	Nursery Gym 5	1	\$2,050.00	\$2,050.00
H832	Bulletin Board 32" x 48"	2	\$195.00	\$390.00
J208	Childshape Chair 8"	4	\$72.00	\$288.00
J432	Teacher Chair, 12"	2	\$163.00	\$326.00
J640	Child's Armchair, Neutral	1	\$310.00	\$310.00
J710	Woodcrest Chair 10"	4	\$89.00	\$356.00
M161	Toddler Cot	7	\$60.00	\$420.00
M171	Toddler Cot Dolly	1	\$70.00	\$70.00
			<b>Total</b>	<b>\$12,274.00</b>