



Sample Infant A

8 Children 6wks - 12 months
(Approximately 500 sq feet)

Need to customize? Call 800.777.4244 or
email Sales@CommunityPlaythings.com

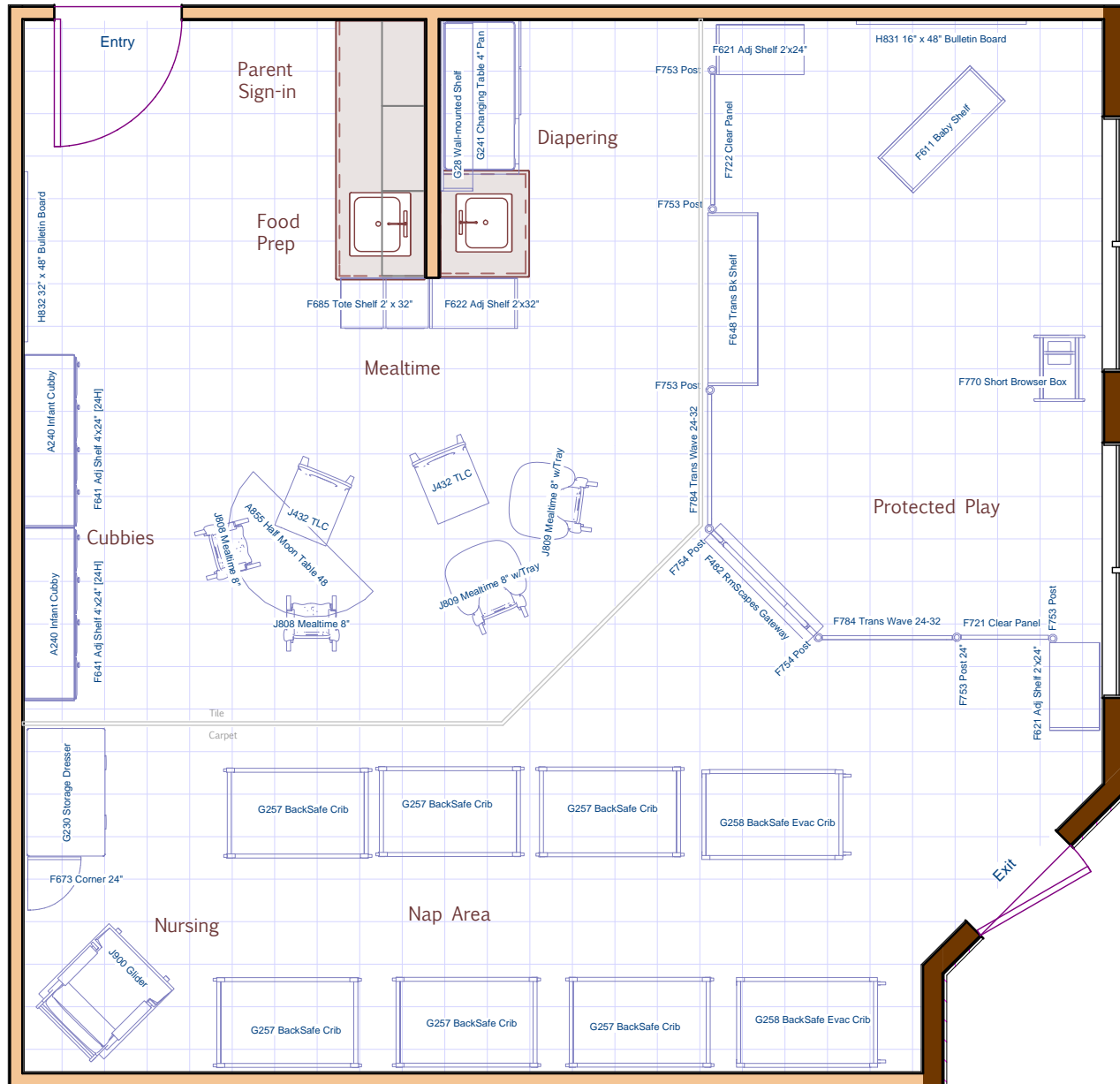




Sample Infant A

8 Children 6wks - 12 months
(Approximately 500 sq feet)

Need to customize? Call 800.777.4244 or
email Sales@CommunityPlaythings.com





Sample Infant A

8 children, 6 wks-12 months

Pricing intended for budgeting purposes only. Contact Community Playthings for a formal quote.

Item No.	Description	Qty	Price	Ext. Price
A240	Infant Cubby 4	2	\$795.00	\$1,590.00
A855	Classroom Halfmoon Table 48	1	\$210.00	\$210.00
F482	Roomscapes Gateway	1	\$330.00	\$330.00
F611	Baby Shelf 3' x 16"	1	\$270.00	\$270.00
F621	Adjustable Shelf 2' x 24"	2	\$265.00	\$530.00
F622	Adjustable Shelf 2' x 32"	1	\$320.00	\$320.00
F641	Adjustable Shelf 4' x 24"	2	\$390.00	\$780.00
F648	Translucent Back Shelf 4' x 24"	1	\$395.00	\$395.00
F673	Corner Shelf 24"	1	\$185.00	\$185.00
F685	Tote Shelf 2' x 32"	1	\$425.00	\$425.00
F721	Clear Panel 24" x 24"	1	\$81.00	\$81.00
F722	Clear Panel 36" x 24"	1	\$103.00	\$103.00
F753	Roomscapes Post 24"	5	\$24.00	\$120.00
F754	Roomscapes Post 32"	2	\$27.00	\$54.00
F770	Small Browser Box	1	\$160.00	\$160.00
F784	Translucent Wave Panel 24" to 32"	2	\$146.00	\$292.00
G230	Storage Dresser	1	\$950.00	\$950.00
G241	Changing Table with 4" Pan	1	\$1,075.00	\$1,075.00
G257	BackSafe Crib (with Clear View Ends)	6	\$540.00	\$3,240.00
G258	BackSafe Evacuation Crib (with Clear View Ends)	2	\$540.00	\$1,080.00
G28	Wall-mounted Shelf	1	\$360.00	\$360.00
H831	Bulletin Board 16" x 48"	1	\$135.00	\$135.00
H832	Bulletin Board 32" x 48"	1	\$195.00	\$195.00
J432	Teacher Chair, 12"	2	\$163.00	\$326.00
J809	Mealtime Chair 8" with Tray	2	\$175.00	\$350.00
J808	Mealtime Chair 8"	2	\$101.00	\$202.00
J900	Community Glider, Blue	1	\$545.00	\$545.00
			Total	\$14,303.00