



Sample School Age A

20 Children 6-8yrs
(Approximately 645 sq feet)

Need to customize? Call 800.777.4244 or
email Sales@CommunityPlaythings.com

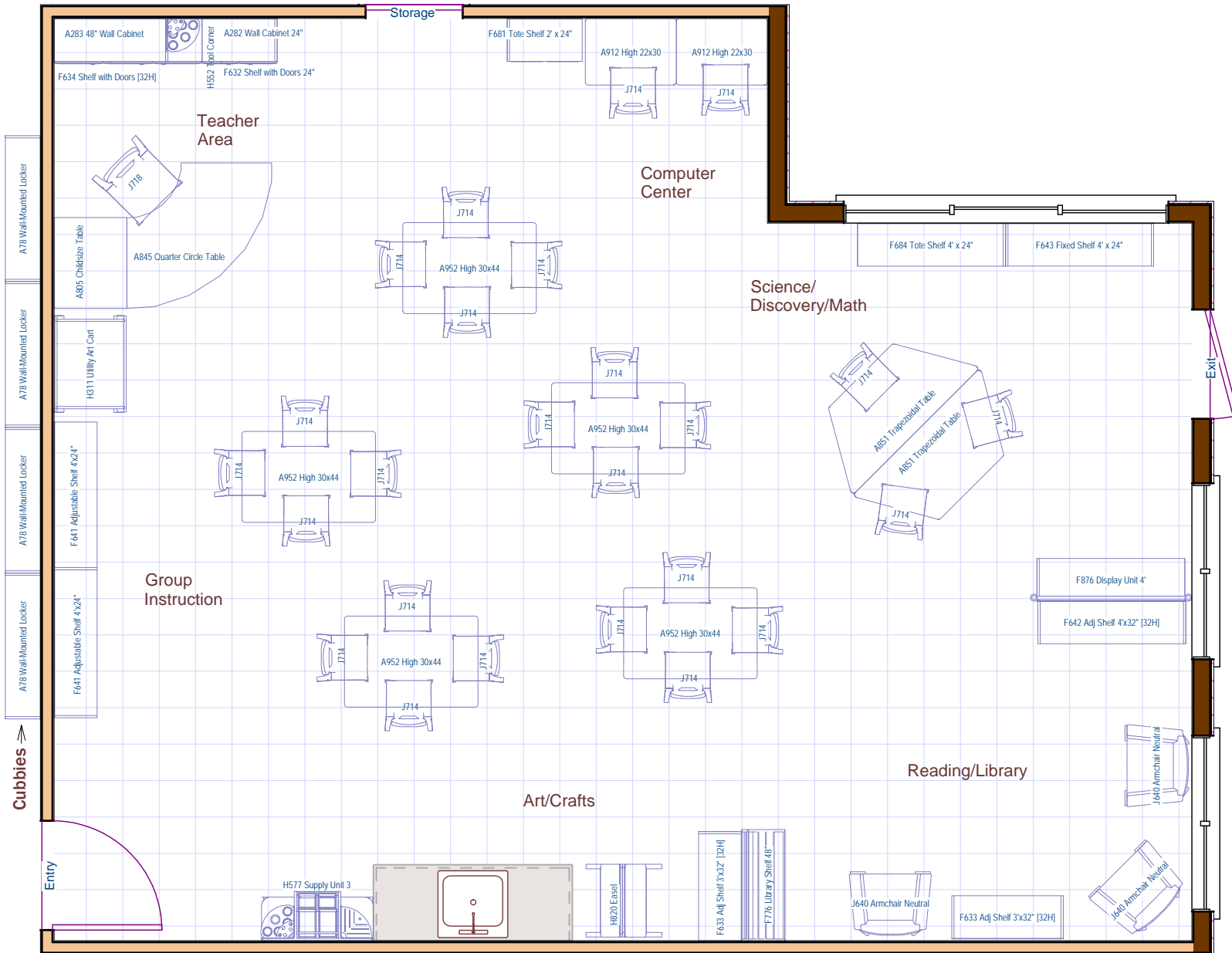




Sample School Age A

20 Children 6-8yrs
(Approximately 645 sq feet)

Need to customize? Call 800.777.4244 or
email Sales@CommunityPlaythings.com





Sample School Age A

20 children, 6-8 years

Pricing intended for budgeting purposes only. Contact Community Playthings for a formal quote.

| Item No. | Description | Qty | Price | Ext. Price |
|----------|--------------------------------------|-----|--------------|--------------------|
| A282 | Wall-Mounted Cabinet 24" | 1 | 355 | 355 |
| A283 | Wall-Mounted Cabinet 48" | 1 | 560 | 560 |
| A78 | Wall-Mounted Locker | 4 | 175 | 700 |
| A805 | Classroom Childsize Table | 1 | 170 | 170 |
| A845 | Classroom Quarter Circle Table | 1 | 315 | 315 |
| A851 | Classroom Trapezoidal Table | 2 | 230 | 460 |
| A912 | High 22" x 30" MultiTable | 2 | 182 | 364 |
| A952 | High 30" x 44" MultiTable | 5 | 267 | 1335 |
| F632 | Adjustable Shelf with Doors 3' x 24" | 1 | 510 | 510 |
| F633 | Adjustable Shelf 3' x 32" | 2 | 400 | 800 |
| F634 | Adjustable Shelf with Doors 3' x 32" | 1 | 600 | 600 |
| F641 | Adjustable Shelf 4' x 24" | 2 | 390 | 780 |
| F642 | Adjustable Shelf 4' x 32" | 1 | 480 | 480 |
| F643 | Fixed Shelf 4' x 24" | 1 | 395 | 395 |
| F681 | Tote Shelf 2' x 24" | 1 | 320 | 320 |
| F684 | Tote Shelf 4' x 24" | 1 | 550 | 550 |
| F776 | Library Shelf | 1 | 350 | 350 |
| F876 | Display Unit 4' w/ Totes or Baskets | 1 | 810 | 810 |
| H311 | Utility Cart | 1 | 300 | 300 |
| H552 | Tool Corner | 1 | 115 | 115 |
| H577 | Supply Unit 3 w/ totes or baskets | 1 | 875 | 875 |
| H820 | Multi-purpose Easel | 1 | 340 | 340 |
| J640 | Child's Armchair, Neutral | 3 | 310 | 930 |
| J714 | Woodcrest Chair 14" | 25 | 108 | 2700 |
| J718 | Woodcrest Chair 18" | 1 | 170 | 170 |
| | | | | |
| | | | Total | \$15,284.00 |