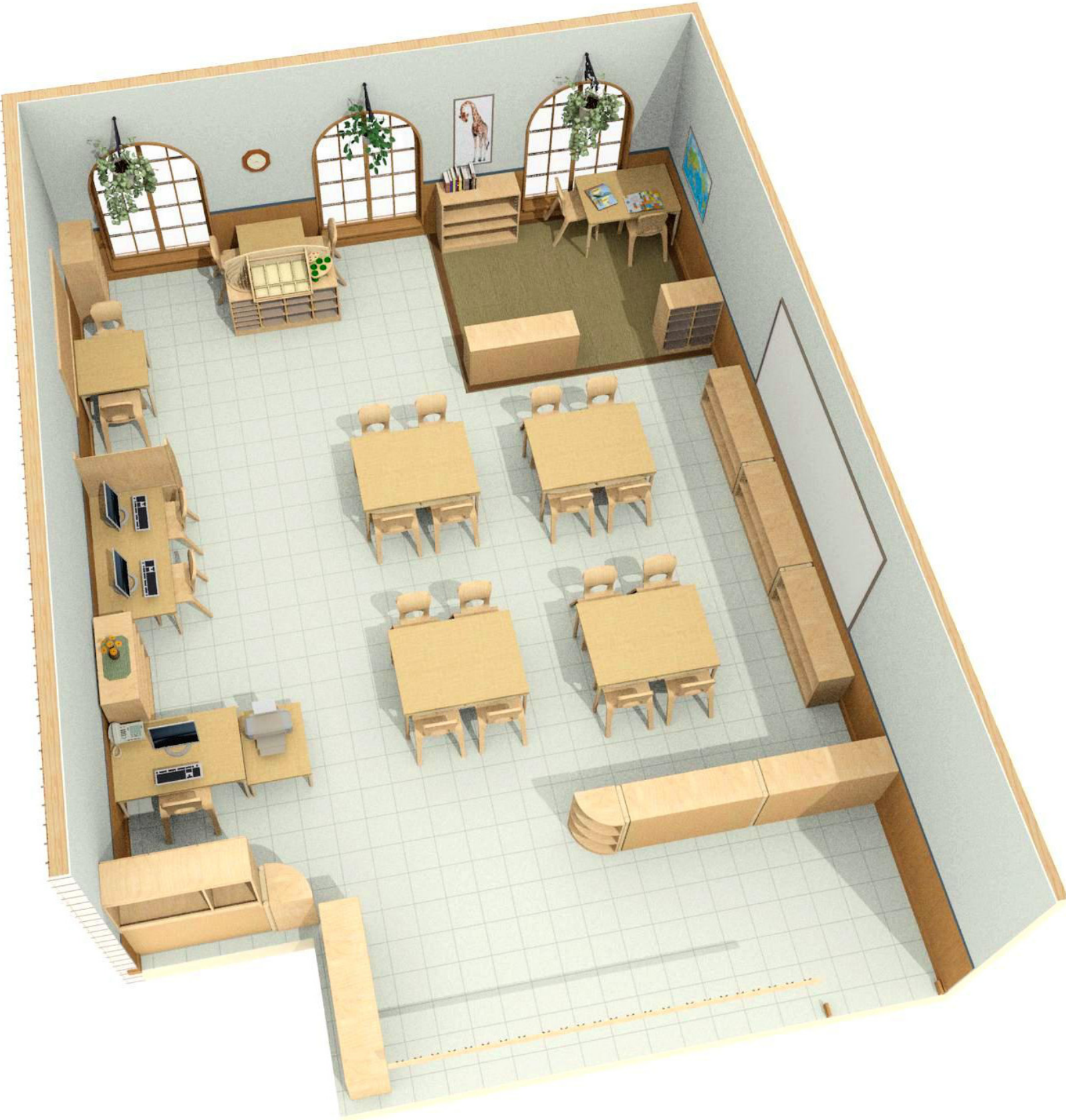




Sample School Age B

16 Children 8-10yrs
(Approximately 568 sq feet)

Need to customize? Call 800.777.4244 or
email Sales@CommunityPlaythings.com

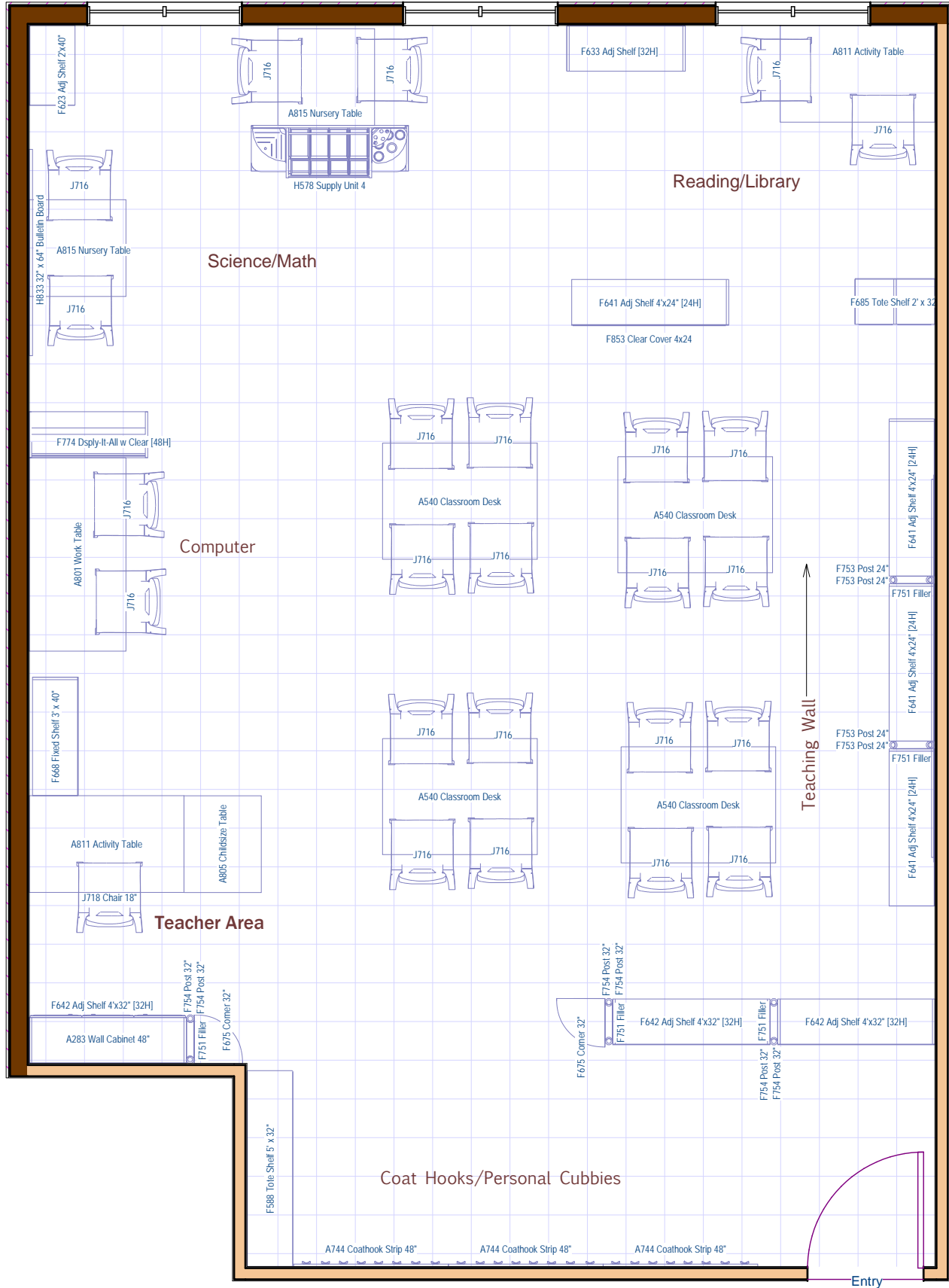




Sample School Age B

16 Children 8-10yrs
(Approximately 568 sq feet)

Need to customize? Call 800.777.4244 or
email Sales@CommunityPlaythings.com





Sample School Age B

16 children, 8-10 years

Pricing intended for budgeting purposes only. Contact Community Playthings for a formal quote.

Item No.	Description	Qty	Price	Ext. Price
A283	Wall-Mounted Cabinet 48"	1	\$560.00	\$560.00
A540	Four-Seater Desk	4	\$535.00	\$2,140.00
A744	Coathook Strip 48"	3	\$67.00	\$201.00
A801	Classroom Work Table	1	\$250.00	\$250.00
A805	Classroom Childsize Table	1	\$170.00	\$170.00
A811	Classroom Activity Table	2	\$230.00	\$460.00
A815	Classroom Nursery Table	2	\$175.00	\$350.00
F588	Tote Shelf 32" x 60"	1	\$860.00	\$860.00
F623	Adjustable Shelf 2' x 40"	1	\$390.00	\$390.00
F633	Adjustable Shelf 3' x 32"	1	\$400.00	\$400.00
F641	Adjustable Shelf 4' x 24"	4	\$390.00	\$1,560.00
F642	Adjustable Shelf 4' x 32"	3	\$480.00	\$1,440.00
F668	Fixed Shelf 3' x 40"	1	\$505.00	\$505.00
F675	Corner Shelf 32"	2	\$240.00	\$480.00
F685	Tote Shelf 2' x 32"	1	\$425.00	\$425.00
F751	Filler	5	\$5.00	\$25.00
F753	Roomscapes Post 24"	4	\$24.00	\$96.00
F754	Roomscapes Post 32"	6	\$27.00	\$162.00
F774	Display-It-All with Clear Panel	1	\$480.00	\$480.00
F853	Clear Cover for Shelf	1	\$48.00	\$48.00
H578	Supply Unit 4 w/ totes or baskets	1	\$1,040.00	\$1,040.00
H833	Bulletin Board 32" x 64"	1	\$325.00	\$325.00
J716	Woodcrest Chair 16"	24	\$140.00	\$3,360.00
J718	Woodcrest Chair 18"	1	\$170.00	\$170.00
			Total	\$15,897.00